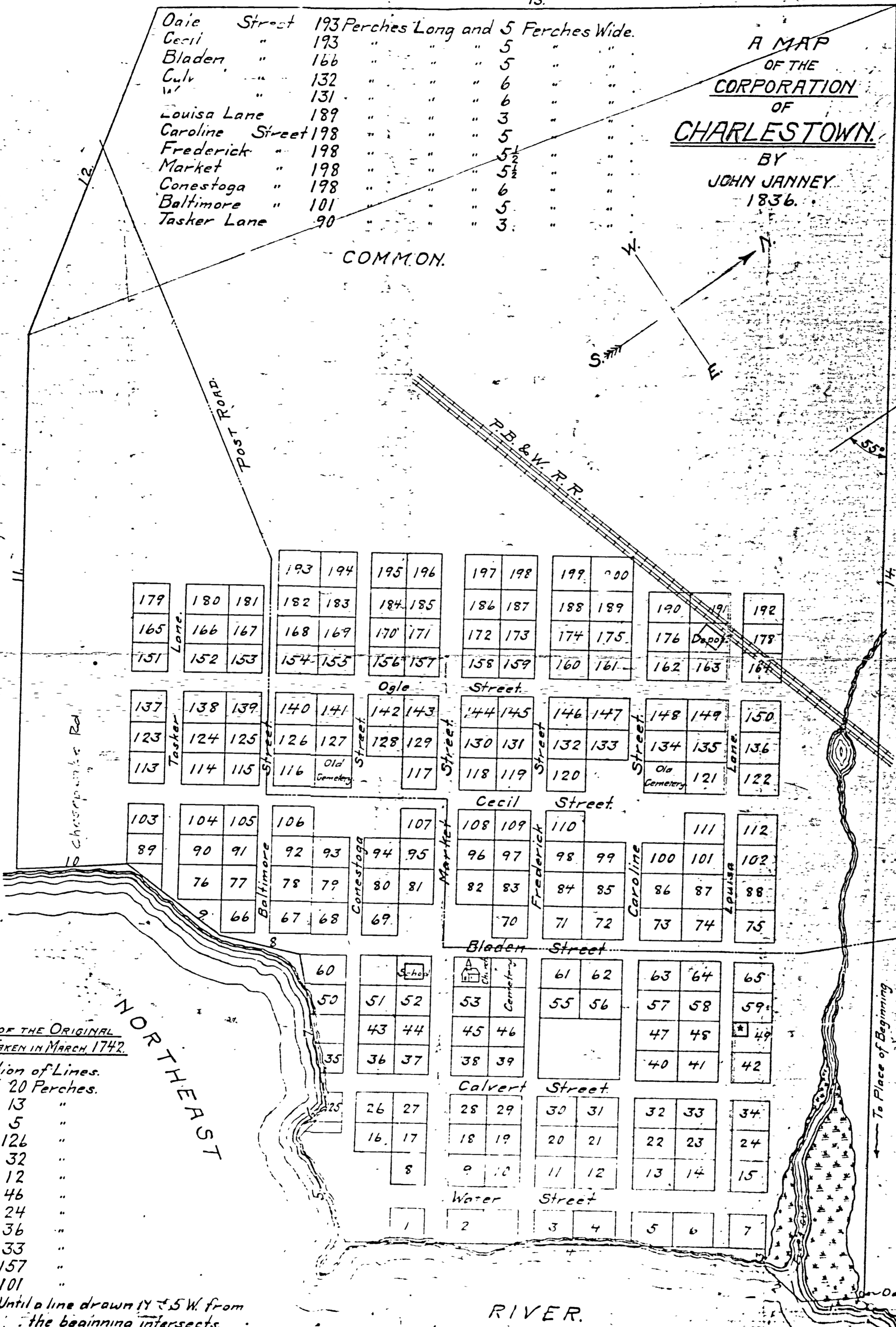


A MAP  
OF THE  
CORPORATION  
OF  
**CHARLESTOWN.**  
BY  
JOHN JANNEY  
1836.

Daie Street	193	Perches Long and 5	Perches Wide.
Cecil "	193	" "	5 "
Bladen "	166	" "	5 "
Calv "	132	" "	6 "
" "	131	" "	6 "
Louisa Lane	189	" "	3 "
Caroline Street	198	" "	5 "
Frederick "	198	" "	5 1/2 "
Market "	198	" "	5 1/2 "
Conestoga "	198	" "	6 "
Baltimore "	101	" "	5 "
Tasker Lane	90	" "	3 "



TRUE COPY OF THE ORIGINAL  
COURSES TAKEN IN MARCH 1742.

- Explanation of Lines.
- 1 S. 30 W. 20 Perches.
  - 2 S. 72 W. 13 "
  - 3 N. 55 W. 5 "
  - 4 S. 35 W. 126 "
  - 5 N. 80 W. 32 "
  - 6 N. - - 12 "
  - 7 N. 66 W. 46 "
  - 8 S. 46 W. 24 "
  - 9 S. 71 W. 36 "
  - 10 S. 29 W. 33 "
  - 11 N. 53 W. 157 "
  - 12 N. 33 1/2 W. 101 "
  - 13 N. 35 E. Until a line drawn N 1/2 S W. from the beginning intersects.
  - 14 S. 55 E. to the beginning.
- Containing 500 Acres - more or less.  
Viz: 200 Acres in Street and Lot  
300 " " Common

Each Lot is 1 1/2 Perches or 189 1/2 feet long and 5 Perches or 148 1/2 feet wide

Copy of Drawing Traced from the Originals  
for John B. Graham, by W. H. Chapman,  
March 4, 1898.  
Copied for G. Bernard Nathaniel by  
Dec 10, 1914 - G. L. Brewington